

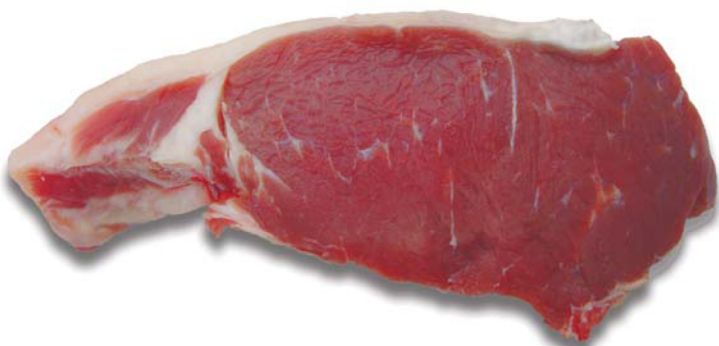


TOMAHAWK™



**H
E
A
L
T
H
S
U
P
P
O
R
T**

S E E T H E D I F F E R E N C E



If only feed additives were graded like beef.





TOMAHAWK™



The unique success factors of Tomahawk are seen in its evolutionary selection for biological activity and structural novelty. Tomahawk is a combination of innovative biologically active compounds to help farmers meet modern day challenges. MicroBasics is the market leader in supplying our customers with innovative products that show a high probability of success.

Lessons from Nature



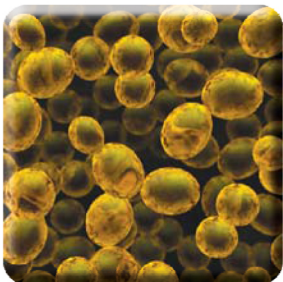
Manage pathogens with **Bacillus** strains.

Bacillus Subtilis grows in the digestive tract and produces large quantities of digestive enzymes to aid the digestion of feed. **Bacillus Subtilis** also competes with pathogenic bacteria for space on the intestinal wall. It is essential to keep them out of the sick pen.



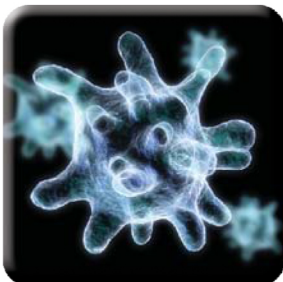
Drive beef production with yeast's secret weapon.

Tomahawk contains the functional carbohydrate MOS, which has been extracted from the wall of the yeast cell. The ability of **MOS** to decrease the prevalence of intestinal pathogenic bacteria and to prevent their colonization of the gastrointestinal tract is well documented. The positive effects of **MOS** on the animals immune defenses have resulted in better animal performance.



Get cattle started right.

Tomahawk contains highly concentrated **Yeast Culture**. **Yeast Culture** targets enhanced rumen function- improving digestibility, dry matter intake and helps your animals during periods of heat stress. **Yeast Culture** allows animals to fully utilize nutrients from their feed to overcome stress, build the immune system, stabilizes rumen environment and utilizes lactic acid. Good Nutrition and **Yeast Culture** ensure they step up to the bunk.



Support immune health with **Immutides-3**.

Immutides-3 is MicroBasics unique blend of 3 Biologically Active Polysaccharides **Strong beef calves start with a mother in peak health**. It is a true balancing act to provide proper nutrition to beef cow's while also keeping their digestive systems healthy. Veterinarians and nutritionists are focusing more attention on intestinal health as well as rumen health. Optimizing Feed and nutrient utilization is key to her Immune Status. If good nutrition is not in place she will fail to meet her genetic potential and her Calf will develop serious health problems.

Feed Good-
Do Good!

TOMAHAWK
DRY • LIQUID • PASTE • NANO



Cows and Calves

Challenges that affect your Bottom Line:

- Health problems caused by scours or respiratory disease result in poor growth.
- Health problems add cost to prevent and treat diseases. Poor health leads to an increase in morbidity and death-loss.
- Pathogens destroy gut health and integrity. This leads to a decrease in absorption of vital nutrients and thus performance.
- Immuno-suppression leads to major economic loss in any operation.

Natures Solutions to enhance the Cow's Immune System naturally.

When a cow becomes sick, one or more components of her immune system have not performed adequately. The goal for any producer is to help support the cow's immune system and allow her to regain her health so that she can reach her genetic, production and reproduction potential. The efficiency of the immune response relies not only on specific recognition of foreign antigens, but also on the nutrition status of the cow. Beef producers should take advantage of nature's solutions to ensure that the cow and calf's immune status are at peak performance.



Because You Care About The
Animals You Feed



Don't shortchange your starter ration

Picture This: A truckload of new cattle has just arrived!

Excessive weight loss during shipment contributes to **greater calf morbidity** after arrival at your feedlot.

Getting these new cattle on feed as quickly as possible is important for optimal response to health conditioning programs.

When these calves **rumen's are not functioning properly**, these calves are unable to fully utilize nutrients from their feed. This helps them overcome stress, build their immune system, and do better in the feedlot.

If their immune system cannot withstand the stress and health challenges, much less respond to vaccinations, then cattle get sick...and sick cattle cost you money.



MicroBasics

7716 Briza Placida • San Diego, CA 92127

Telephone: 1-888-WHY-1316

www.microbasics.com • email: service@microbasics.com

DISCOVER THE NATURAL CHOICE